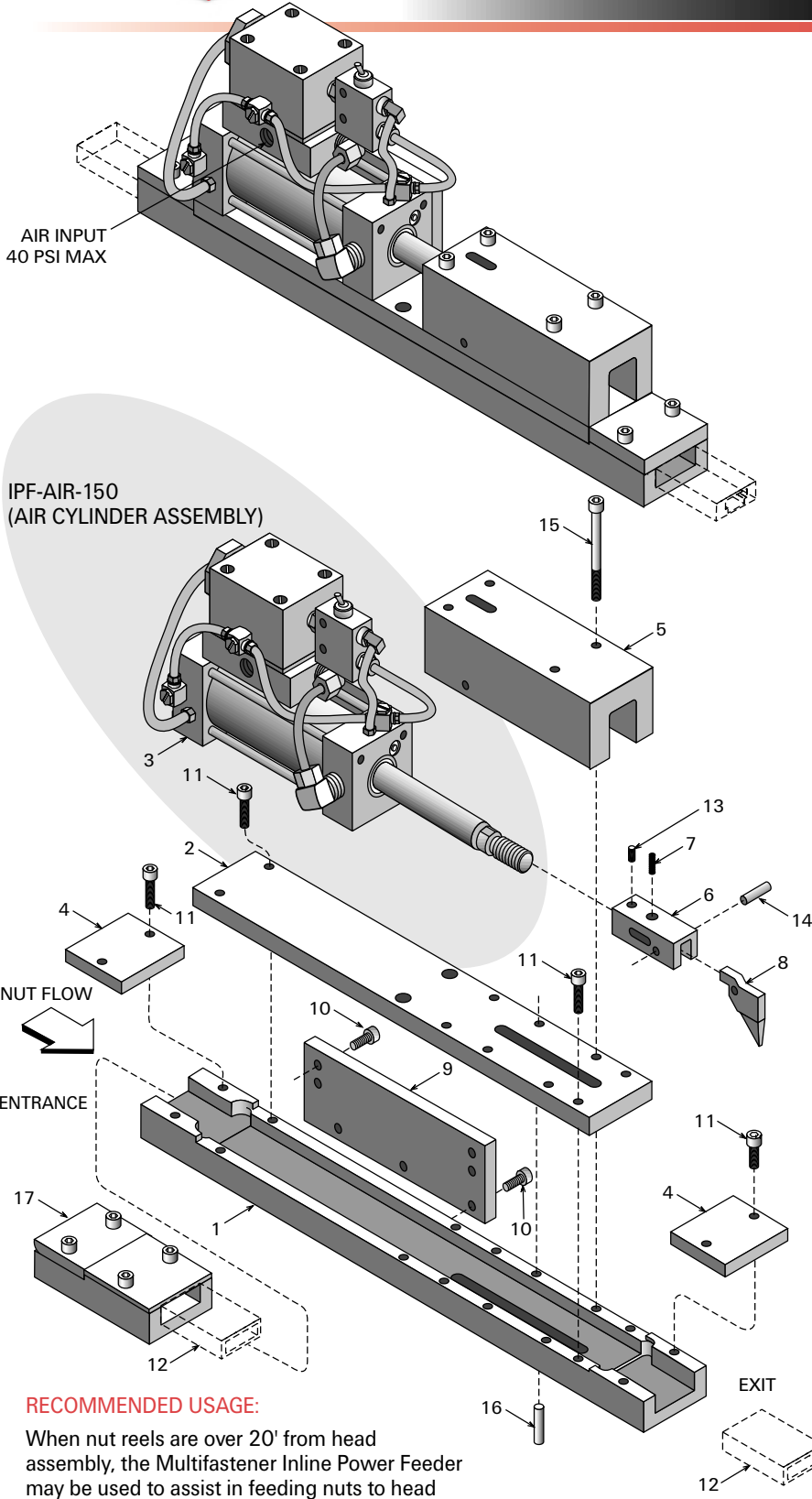




Inline Power Feeder

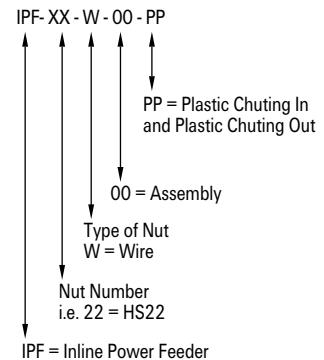
MPF STYLE



	Part Number	No. Req'd.	
1.	Feed Block	MPF-XX-01-PP	1
2.	Top Plate	MPF-YYY-02-PP	1
3.	Air Cylinder (1-1/2 bore)	MPF-AIR-PP	1
4.	Cover Plate	MPF-XX-04-PP	2
5.	Slide Track	IPF-COM-B-05	1
6.	Clevis	IPF-COM-06	1
7.	Nut Pawl Spring	CS-3	1
8.	Nut Pawl	MPF-COM-31	1
9.	Side Mounting Plate	MPF-YYY-09	1
10.	Air Cylinder Screws (1/4-20 x 5/8" socket head cap screw)	MS-17	7
11.	Cover Plate Screws (1/4-20 x 1/2" socket head cap screw)	500021	8
12.	Chuting	HS/MP-XX-12E	2
13.	Clevis Set Screw (#10-32 x 1/4")	500040	1
14.	Clevis Dowel (1/4 O.D. x 3/4" long)	CS-15	1
15.	Slide Track Screws (1/4-20 x 2-3/4" socket head cap screw)	MS-156	4
16.	Slide Track Dowel (1/4 O.D. x 1-1/4" long)	500300	2
17.	Chute Adaptor	PN-10377-D5-XX	1

XX - denotes nut number
YYY - denotes feeder width

PART NUMBERING EXPLANATION FOR COMPLETE ASSEMBLY



RECOMMENDED USAGE:

When nut reels are over 20' from head assembly, the Multifastener Inline Power Feeder may be used to assist in feeding nuts to head assembly. When changing reel of nuts, the Inline Power Feeder allows loading of reel and pushing new nuts up to old strip so that job does not stop.

Repair Kits	
DMK-1	Cylinder
DMK-12-HD	Inner Pilot
RVK-6	Valve

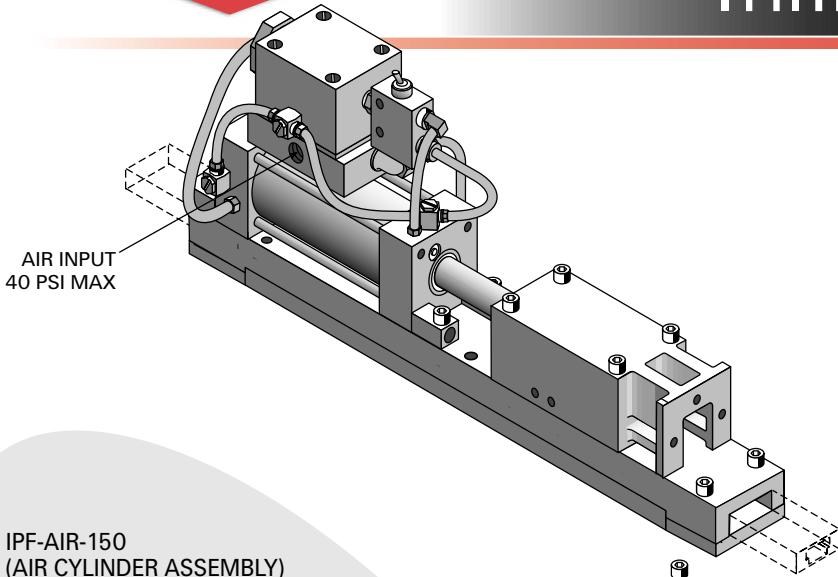
Fasten it. Drive it.®



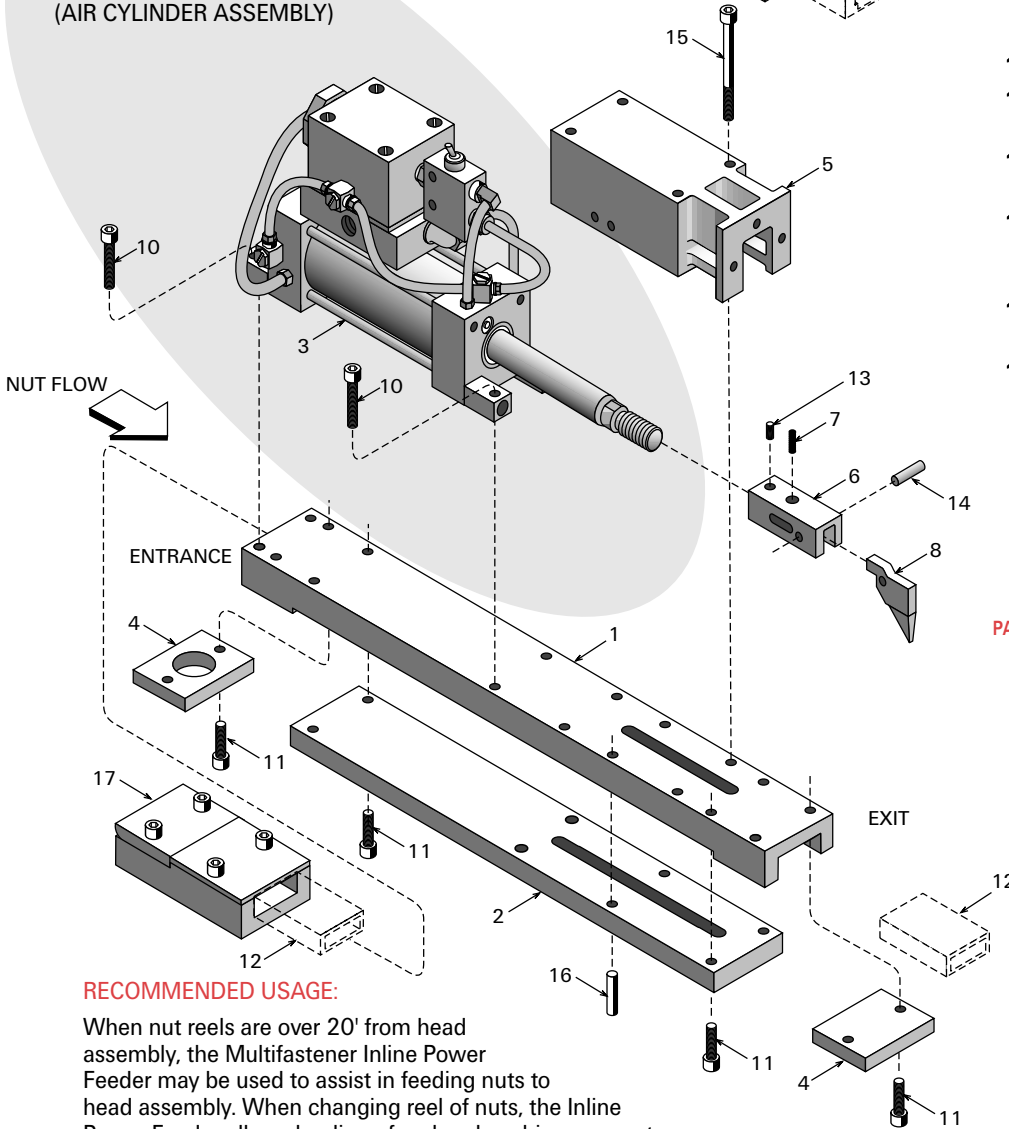


Inline Power Feeder

IPF STYLE



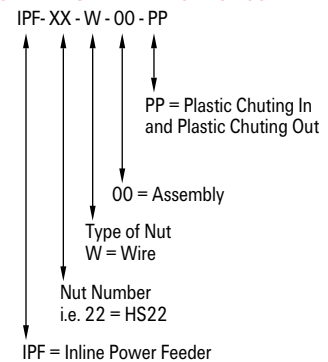
IPF-AIR-150
(AIR CYLINDER ASSEMBLY)



	Part Number	No. Req'd.	
1.	Feed Block	IPF-XX-01-PP	1
2.	Top Plate	IPF-XX-02-PP	1
3.	Air Cylinder (1-1/2 bore)	IPF-AIR-150	1
4.	Cover Plate	IPF-XX-04-PP	2
5.	Slide Track	IPF-COM-W-05	1
6.	Clevis	IPF-COM-06	1
7.	Nut Pawl Spring	CS-3	1
8.	Nut Pawl	MPNC-XX-31	1
10.	Foot Lug Screws (1/4-20 x 1" socket head cap screw)	MS-70	4
11.	Cover Plate Screws (1/4-20 x 1/2" socket head cap screw; low head)	MS-154	8
12.	Chuting	HS/MP-XX-12E	2
13.	Clevis Set Screw (#10-32 x 1/4")	500040	1
14.	Clevis Dowel (1/4 O.D. x 3/4" long)	CS-15	1
15.	Slide Track Screws (1/4-20 x 2-3/4" socket head cap screw)	MS-156	4
16.	Slide Track Dowel (1/4 O.D. x 1" long)	MS-19	2
17.	Chute Adaptor	PN-10377-D5-XX	1

XX - denotes nut number

PART NUMBERING EXPLANATION FOR COMPLETE ASSEMBLY



RECOMMENDED USAGE:

When nut reels are over 20' from head assembly, the Multifastener Inline Power Feeder may be used to assist in feeding nuts to head assembly. When changing reel of nuts, the Inline Power Feeder allows loading of reel and pushing new nuts up to old strip so that job does not stop.

Repair Kits	
DMK-1	Cylinder
DMK-12-HD	Inner Pilot
RVK-6	Valve

Fasten it. Drive it.®

